

For Sale

±1.74 Acres

Land



Frink Street

Cayce, South Carolina

Property Features

- Raw Land For Sale: \$50,000
- ±1.74 acres zoned C-4 in City of Cayce
- ±140' road frontage on Hafley Court
- ±177' road frontage on Frink Street



For more information:

John Gregory

+1 803 744 9896 • jgregory@naicolumbia.com

Lee Bussell, Jr.

+1 803 744 9865 • lbussell@naicolumbia.com

NAIColumbia

THE INFORMATION CONTAINED HEREIN HAS BEEN GIVEN TO US BY THE OWNER OF THE PROPERTY OR OTHER SOURCES WE DEEM RELIABLE. WE HAVE NO REASON TO DOUBT ITS ACCURACY, BUT WE DO NOT GUARANTEE IT. ALL INFORMATION SHOULD BE VERIFIED PRIOR TO PURCHASE OR LEASE.

807 Gervais Street, Suite 200
Columbia, South Carolina 29201
+1 803.254.0100
www.naicolumbia.com

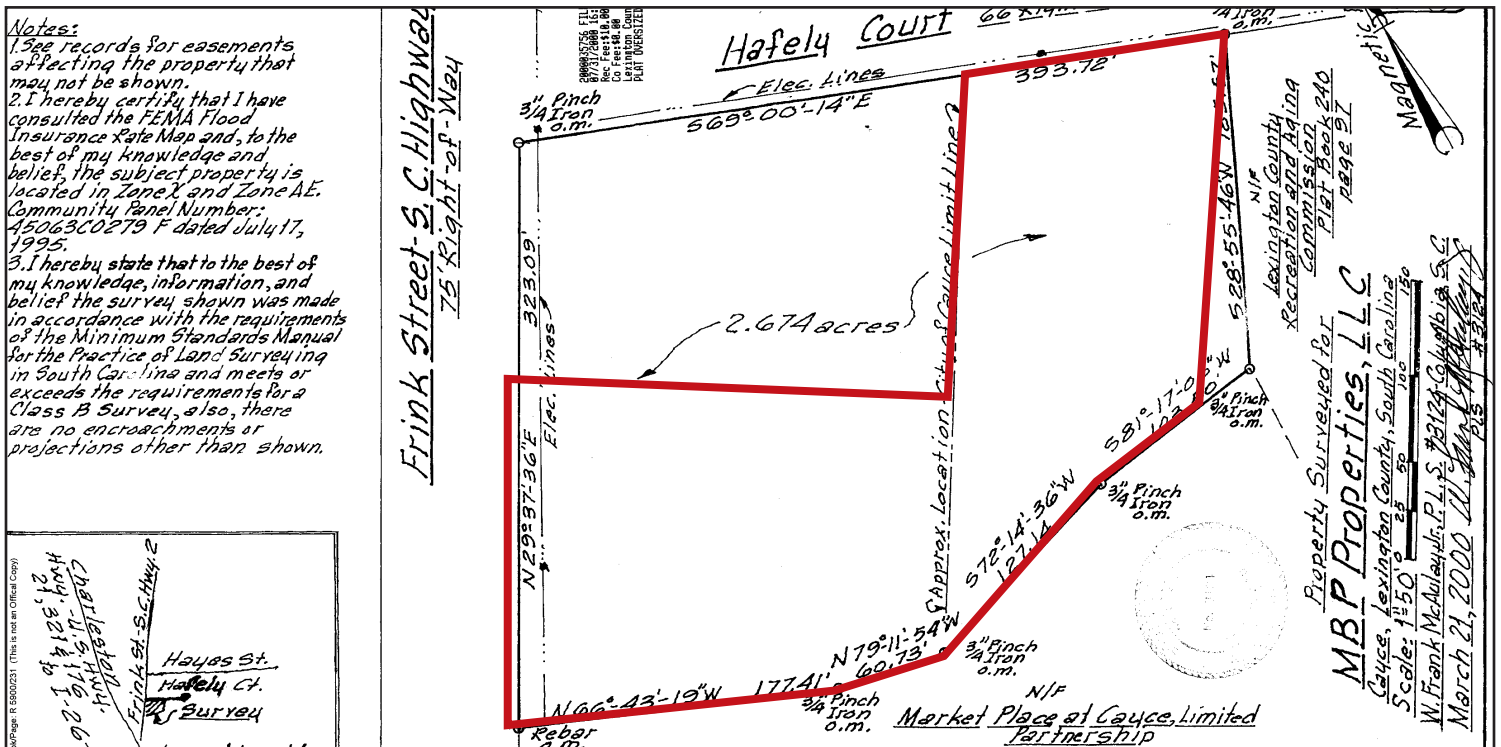
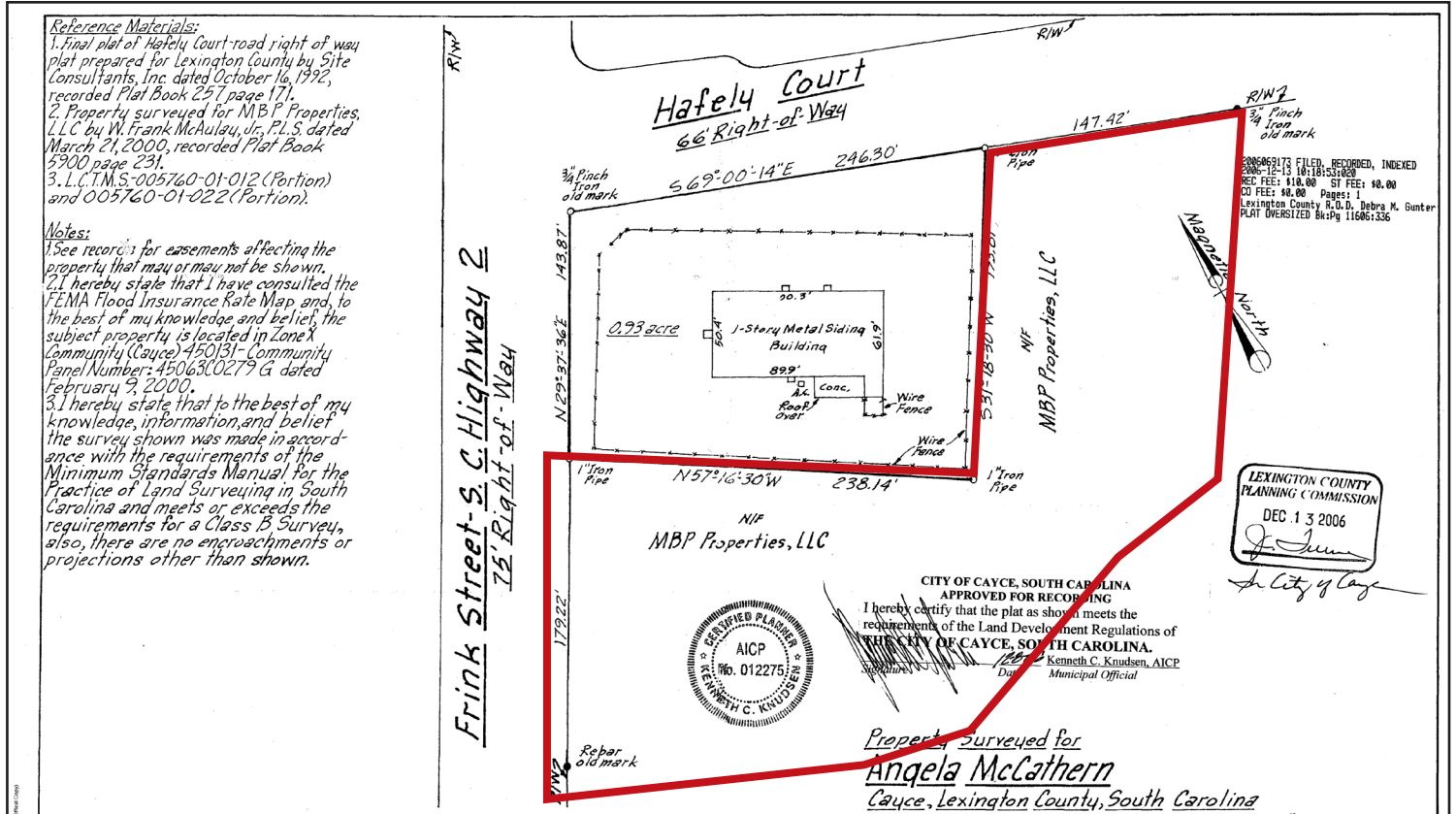
Property Plats

Frink Street - Lexington, South Carolina

For Sale

±1.74 Acres

Land





Map Updated: Friday, December 6, 2019. This information submitted is not guaranteed. Although obtained from reliable sources, all information should be confirmed prior to use or reliance upon the information. This document may not be reproduced in whole or in part without the express written consent of NAI Avant.

Demographic Profile

Frink St & Hafley Ct | Cayce, South Carolina

	1 Mile	3 Miles	5 Miles		1 Mile	3 Miles	5 Miles
Population				Median Household Income			
2010 Census	4,466	27,107	88,319	2019 Estimate	\$50,294	\$47,139	\$44,128
2019 Estimate	4,629	30,996	98,541	2024 Projection	\$55,920	\$53,015	\$50,845
2024 Projection	4,903	33,131	104,740	Average Household Income			
% Chg. 2019-2024	5.9%	6.9%	6.3%	2019 Estimate	\$62,947	\$60,014	\$60,385
Households				2024 Projection			
2010 Census	1,989	11,854	35,965	2019 Estimate	\$62,947	\$60,014	\$60,385
2019 Estimate	2,059	13,362	40,381	2024 Projection	\$72,398	\$69,440	\$68,721
2024 Projection	2,175	14,243	43,076	Per Capita Household Income			
Families				2019 Estimate			
2010 Census	1,227	6,384	17,530	2019 Estimate	\$27,319	\$25,842	\$25,288
2019 Estimate	1,234	7,058	19,008	2024 Projection	\$31,338	\$29,810	\$28,775
2024 Projection	1,292	7,466	20,056	2019 Household Income Dist.			
2019 Age Dist.				Less than \$15,000			
0 - 4	4.6%	5.2%	4.6%	\$15,000 - \$24,999	10.2%	13.3%	18.2%
5 - 9	4.8%	5.0%	4.4%	\$25,000 - \$34,999	10.6%	11.3%	10.6%
10 - 14	4.9%	4.8%	4.2%	\$35,000 - \$49,999	10.6%	11.8%	11.6%
15 - 19	4.7%	5.2%	9.3%	\$50,000 - \$74,999	18.2%	15.9%	14.0%
20 - 24	5.2%	10.5%	16.3%	\$75,000 - \$99,999	20.9%	22.3%	19.8%
25 - 34	13.6%	15.0%	15.5%	\$100,000 - \$149,999	12.7%	11.6%	10.1%
35 - 44	12.3%	11.8%	10.7%	\$150,000 - \$199,999	12.8%	9.6%	10.2%
45 - 54	12.5%	11.6%	9.8%	\$200,000 and Up	2.4%	2.0%	2.8%
55 - 64	15.5%	12.9%	10.6%	2019 Housing Data			
65 - 74	12.2%	9.6%	8.1%	Owner Occ. Housing Units	1,468	7,077	19,587
75 - 84	7.0%	5.5%	4.4%	Renter Occ. Housing Units	591	6,285	20,794
85+	2.8%	3.0%	2.2%	2019 Business Data			
Median Age				Total Businesses:			
2010 Census	44.5	36.8	29.6	Total Employees:	127	1,548	6,109
2019 Estimate	44.9	38.3	31.9	Average Household Size			
2024 Projection	44.7	39.3	32.9	2010 Census	2.25	2.26	2.24
				2019 Estimate	2.25	2.30	2.25
				2024 Projection	2.25	2.31	2.25